



NORMANDALE
COMMUNITY COLLEGE

HOWTO Video

Use Residual Gas Analyzer (RGA)

Scott Holm-Hansen (612-709-1541)

VACUUM APPLICATIONS

YOUR COLLEGE. YOUR COMMUNITY.

WWW.NORMANDALE.EDU

Discussion WHAT/WHY -

- RGA – provides information of types and amounts of gases in chamber
- Important for troubleshooting issues and quality

<https://www.inficon.com/en/products/residual-gas-analyzers>

Actions

- Reserve equipment
- Login – start rough and if lab requires contaminate using MFC.
- Start High Vacuum system
- Wait for AUX Power to initialize
- With FIREFOX and only **FIREFOX** open the RGA's web site at <http://10.1.105.5>
- Start Emissions and view partial pressures.

NOTE: Lecture will inform you how to analyze information

Reserve

Normandale VAC TECH SCHEDULER 1 2 3 4

Service & Provider

Service

1292 LAB0 - Access REMOTE SYS

VACT1292

- 1292 LAB0 - Access REMOTE SYS
- 1292 LAB1 BOURDON CONVERSIONS
- 1292 LAB2 PUMP DOWN CURVES
- 1292 LAB3 - Boyle's Law P1V1 = P2V2

VACT2293

- 2293 LAB0 - Access REMOTE SYS
- 2293 LAB2 - Pump Down
- 2293 LAB3 - Conductance
- 2293 LABx - RGA

Normandale VAC TECH SCHEDULER 1 2 3 4

Service & Provider

Service

2293 LABx - RGA

Provider

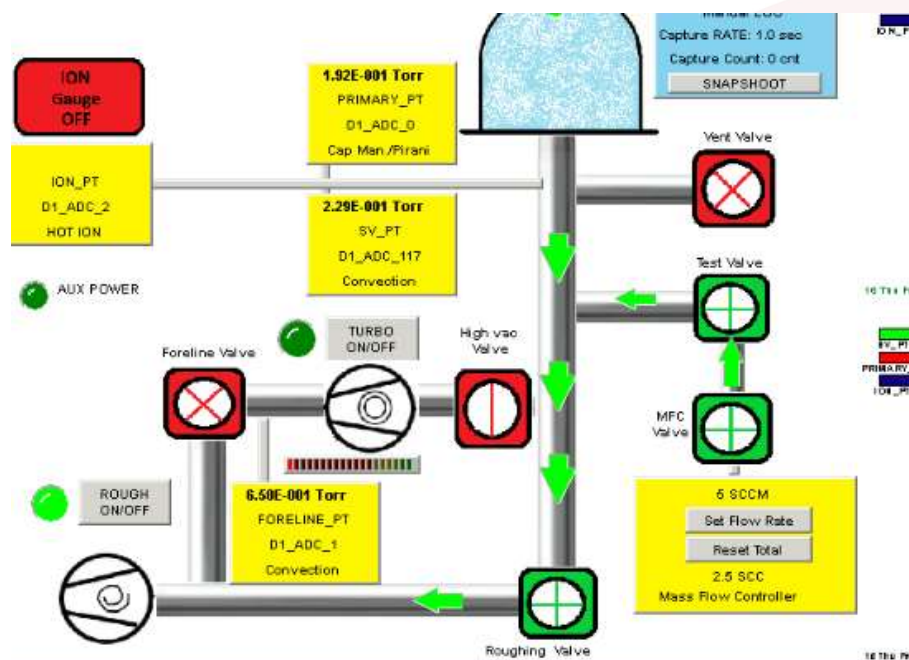
HVAT 08

HVAT 08

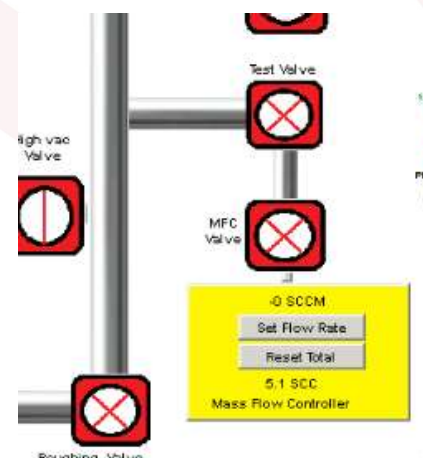
2293 LABx - RGA

[Duration 60 Minutes]

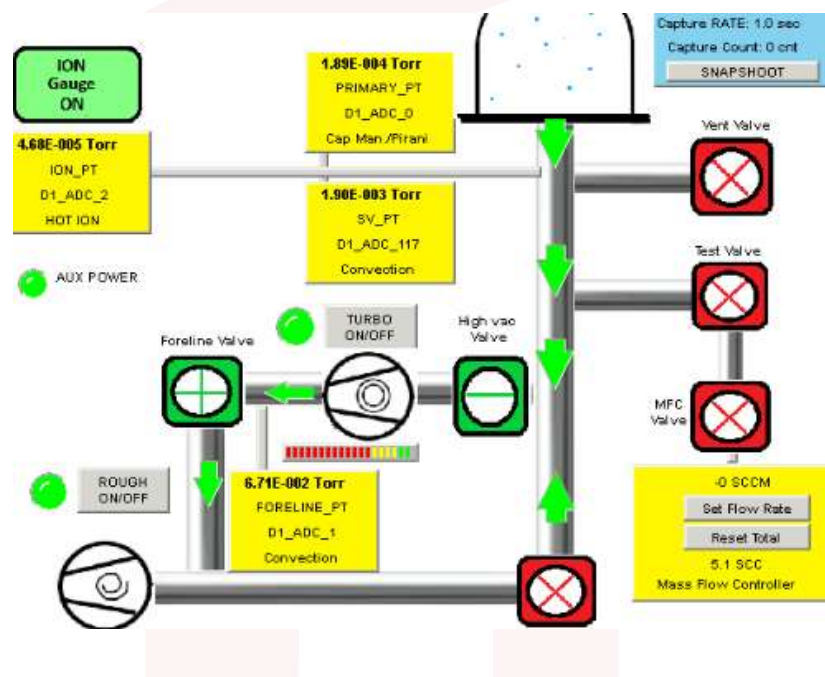
Contaminate



If lab requires a mystery gas contamination, use the MFC and inject 5 SCC – set to 5 SCCM for 1 minute. Stop MFC and isolate.



High Vac Until AUX Power On.. (100 micro Torr or less)



Start Emissions and Monitor



Shutdown

- 1.) Turn Off Emission in the RGA
- 2.) Close all valves and turn off turbo pump
- 3.) Logout of system using:
- 4.) Logoff remote system

Logout User PROGRAM